

# BARA.

## CONSULT



Consulting Engineers and Project Managers

*“creating engineering solutions”*

## COMPANY PROFILE AND CAPABILITY STATEMENT



# INTRODUCTION

**Bara Consult (Pty) Ltd (BARA)** is a recently formed South African company (CK2015/400975/07) comprising of founding members who bring with them a broad spectrum of engineering and project management experience and expertise.

While **BARA** is a newly-formed company, the founding members each have on average over twenty years of technical design and project management experience gained on Civil and Structural Building projects. Projects undertaken have ranged in scale from small housing projects to complex multi-disciplinary commercial and industrial developments.

**BARA** (from the Hebrew word "bärä" meaning "to create") seeks to provide engineering solutions with an innovative and cost-effective approach - hence our motto:  
***"creating engineering solutions"***.

**BARA** is committed to working closely with its clients and allied professionals in the industry to find cost-effective solutions for engineering projects.

**BARA** is a Port Elizabeth based, South African registered business serving the interests of clients throughout South Africa and the African continent through collaboration with other businesses in other centres. This collaboration network of companies is achieved through the establishment of mutually beneficial relationships that result in the sharing of knowledge, ideas, pursuits and resources in order to (i) provide clients with a seamless and personal service regardless of the entity with whom they are dealing at the time, (ii) deal effectively with workload peaks and troughs and (iii) help in the support of like-minded businesses and professionals.

## VISION

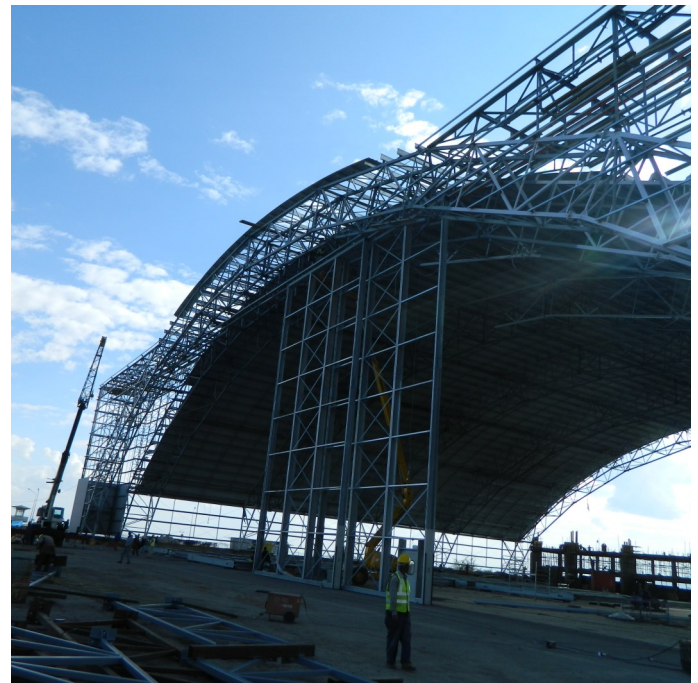
The broad vision of **BARA** is:

*"To be the **leading provider** of consulting engineering services to the commercial building and industrial sector...*

*...in South Africa and in Africa;*

*To be a **partner of choice** for customers (clients, other professionals and contractors) when looking to deliver projects and multidisciplinary engineering solutions;*

*To deliver **superior quality** engineering solutions **consistently, reliably and efficiently.**"*



The **BARA** vision is lived out through pursuing Excellence in engineering solutions, behaving at all times in a highly Professional manner, being Honest and Transparent in all professional engagements and delivering service through effective Teamwork.

## SERVICES

**BARA** provides professional consulting engineering and project management services in the following key sectors:

### ***Industrial and Commercial***

**BARA** has extensive experience in the design and execution of projects that fall within the Industrial and Commercial sectors.

***Industrial:*** The founders of **BARA** have been involved in numerous industrial processing and warehouse developments ranging from small-scale expansions of a few millions ZAR CAPEX to large, complex and intricate new processing plants of close to ZAR1bn CAPEX.

**BARA** has experience in bottling plants of various kinds, refrigeration plants, open warehousing and storage facilities.



**Commercial:** The founders of **BARA** have been responsible for the design and project management of numerous commercial developments ranging from small-scale expansions of existing facilities to large new complexes.

Projects have included retail ventures of various sizes, offices, apartments, hotels and leisure facilities.



### **Low-Cost Housing**

**BARA's** founders have extensive experience in the design and execution of low-cost housing projects and have executed projects varying from a few houses to over a thousand in the same development. They have also undertaken work directly for clients, implementing agents and EPC contractors.



specialised approach to the design of these water retention structures.

### **Civil Engineering**

The founders of **BARA** have general Civil Engineering design experience and expertise through experienced civil engineering designers who are able to provide the necessary technical skills on roads and water projects to complement the building experience and expertise.

### **Project Management**

The founders of **BARA** have gained extensive project management experience on a wide range of projects and are able to take on projects that range in complexity and scale.

### **Reservoirs**

The portfolio of project experience of the founders of **BARA** includes the design, detailing and project management of numerous reservoirs.

Experience in reservoir projects ranges from the design of conventional reinforced concrete to post tensioned concrete structures. **BARA** has developed a unique and



## **COLLABORATION NETWORK**

### **South Africa and Africa**

The founders of **BARA** have extensive experience in executing projects (design and project management) throughout South Africa and the African continent.

Throughout this association with the country at large and the African continent, **BARA** have followed a collaborative approach through working with like-minded professionals in each project location and country.

**BARA's** founders have experience of working on projects in the following countries in Africa: Namibia, Zimbabwe, Mozambique, Tanzania, Kenya, Uganda, Democratic Republic of Congo and Ethiopia.

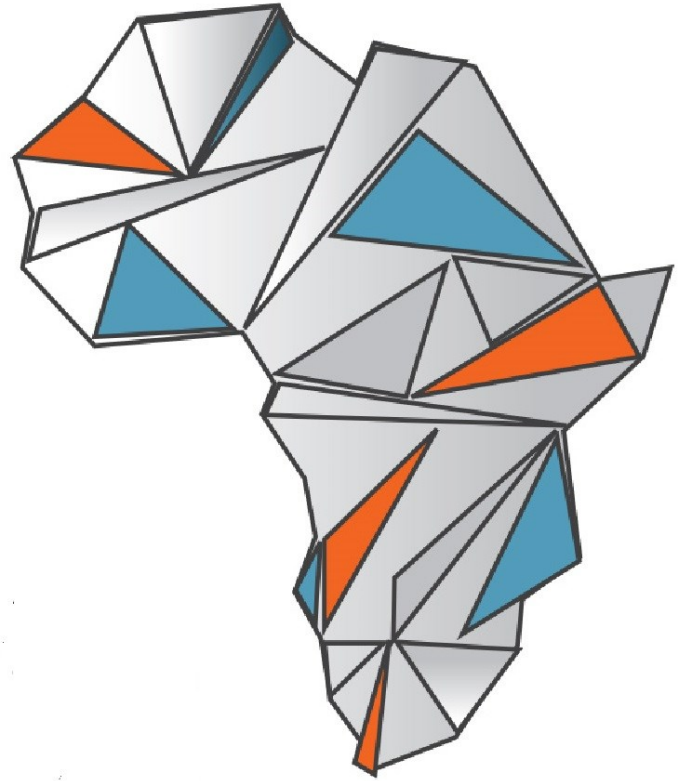
A fundamental tenet of **BARA's** *modus operandi* is seeking to forge strong working partnerships with professionals in key disciplines in the countries of operation, so as to ensure that clients are provided with the very best and most cost- and time-effective solutions in the market.

In all our projects in Africa it has also been our goal to ensure that there is a measure of sharing of knowledge and skills with the partnering professionals, thereby promoting mutual empowerment and professional growth and development.

In South Africa, **BARA** has established a *collaboration network* with companies with an open association for the sharing of knowledge, ideas and opportunities.

Through this network **BARA** is able to execute projects successfully and seamlessly in partnership with its associate companies from: Johannesburg (Gauteng), Durban (KZN), Cape Town (WC), George (WC), East London and Mthatha (EC) and Africa through established partnerships.

*\* Note: All project experience profiled has been gained by the founders of Bara Consult prior to forming the company.*



The team at **BARA** is passionate about creating unique engineering solutions for its clients and are confident that they have the experience, expertise and partners to approach any challenge presented.

### **Contact us...**

For more information about our services, projects experience and curriculum vitae of members:

220 Kragga Kamma Road, Lorraine,  
Port Elizabeth, South Africa, 6001

Email: [info@baraconsult.com](mailto:info@baraconsult.com)

Fax to Email: +27 86 561 2364

Mobile: +27 82 827 3815

